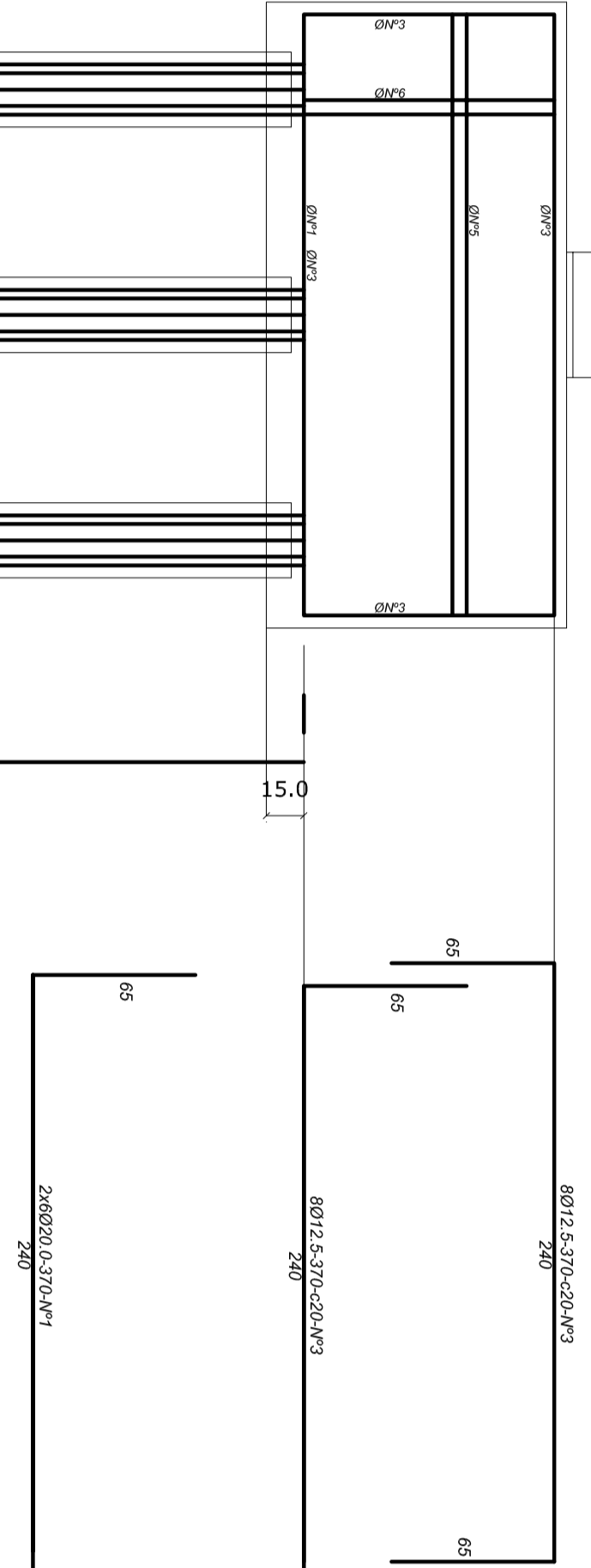
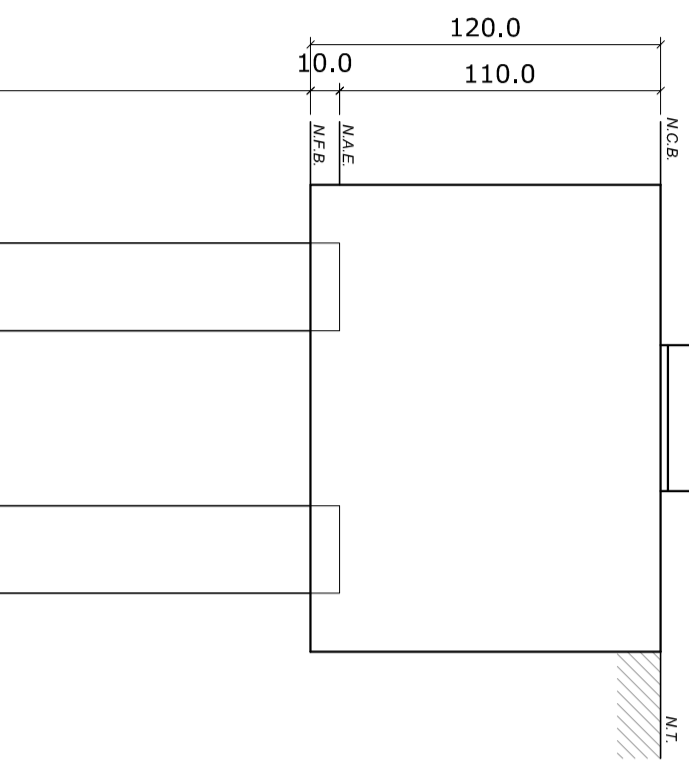
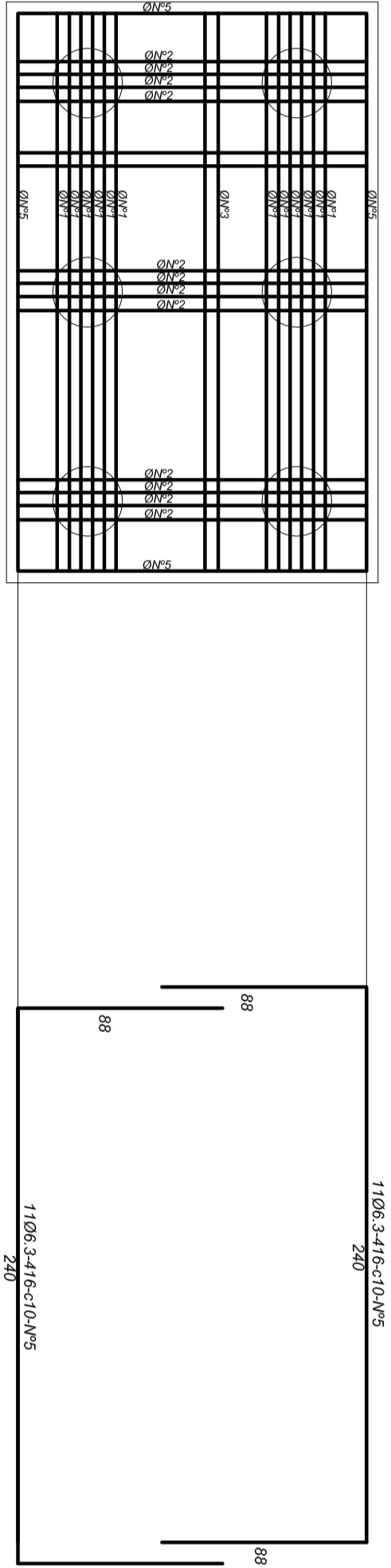
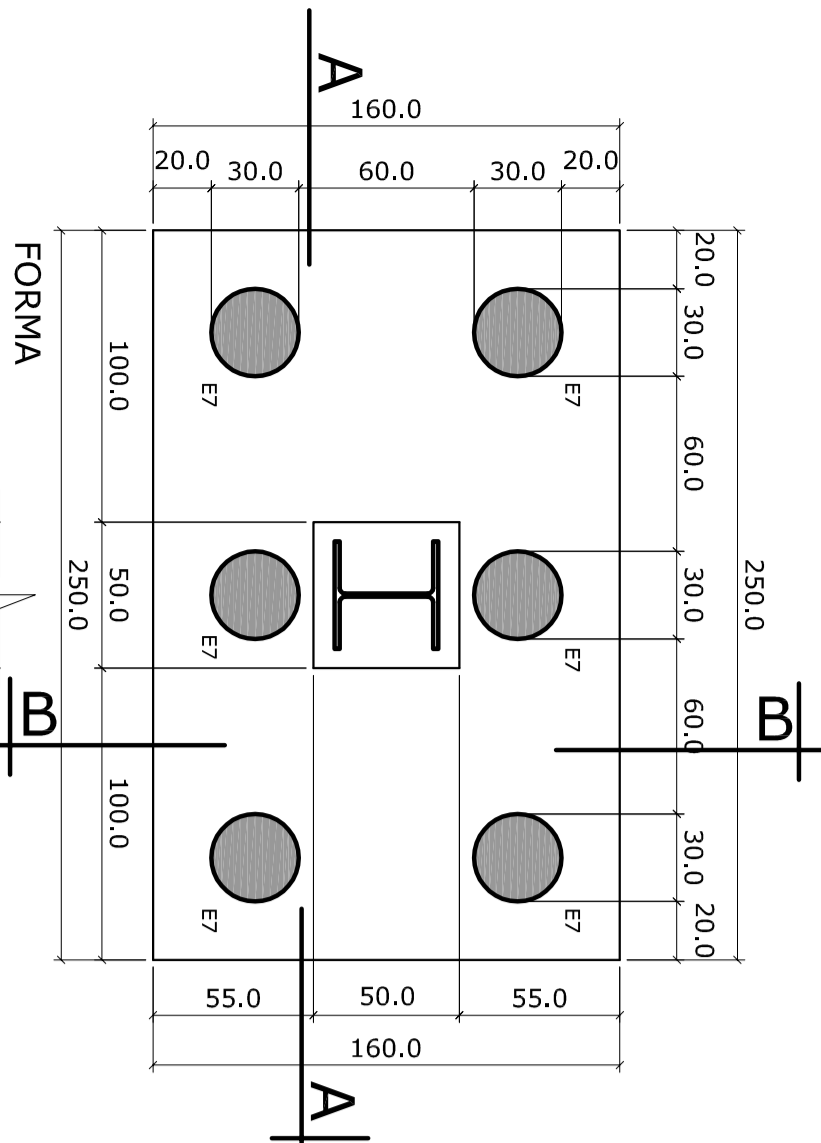


**DETALHE E ARMAÇÃO**  
B(P45)-(1X)

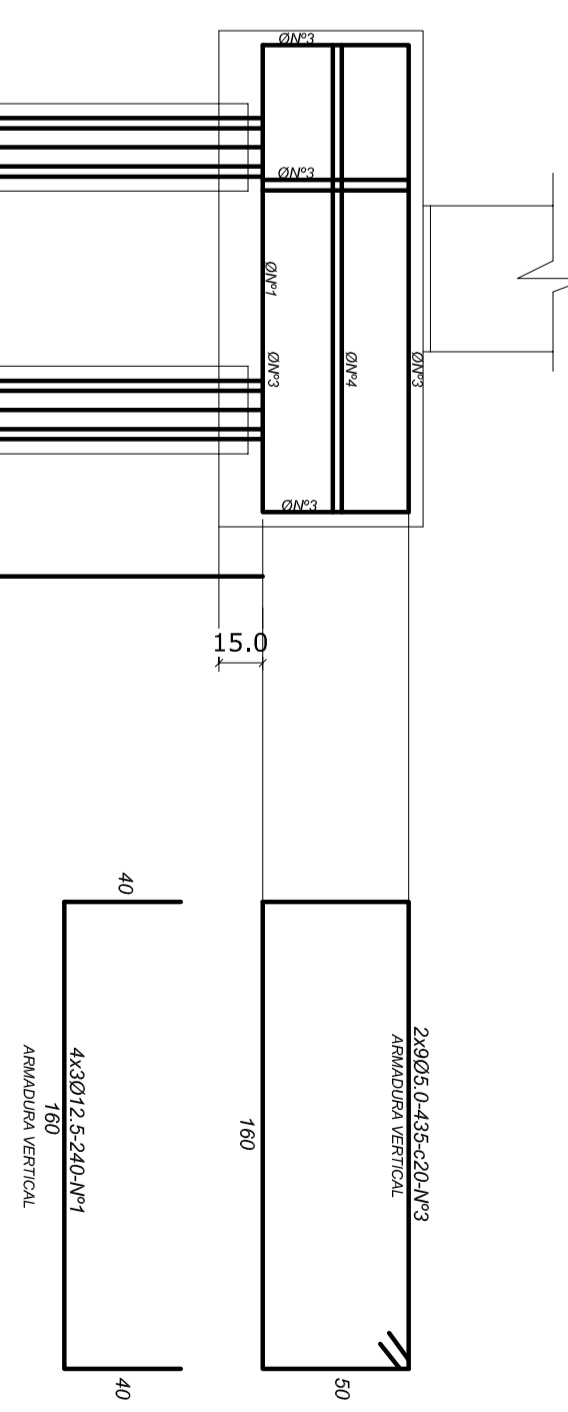
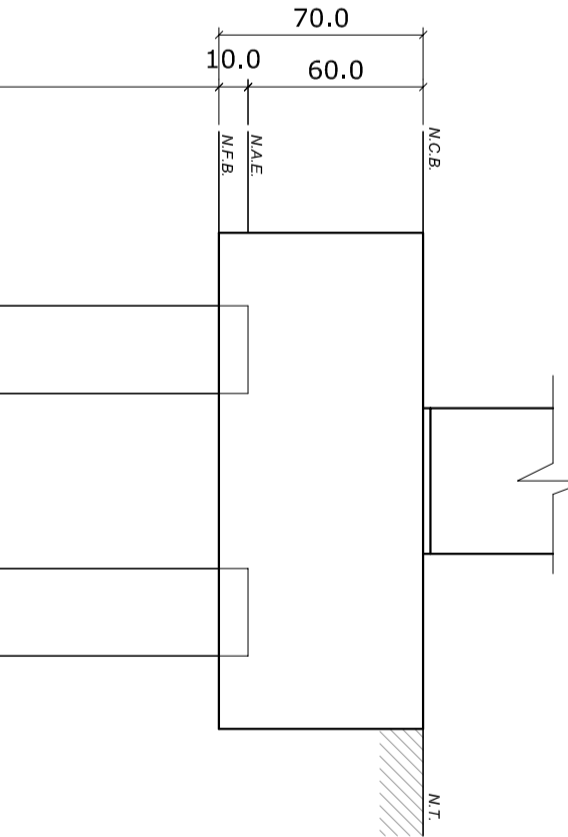
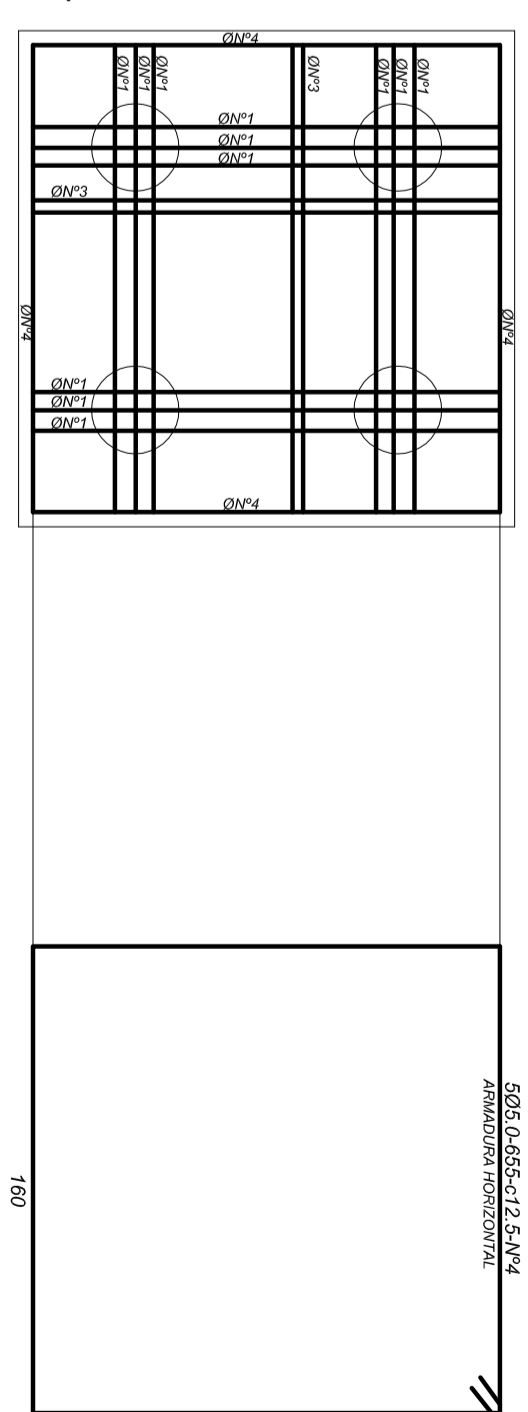
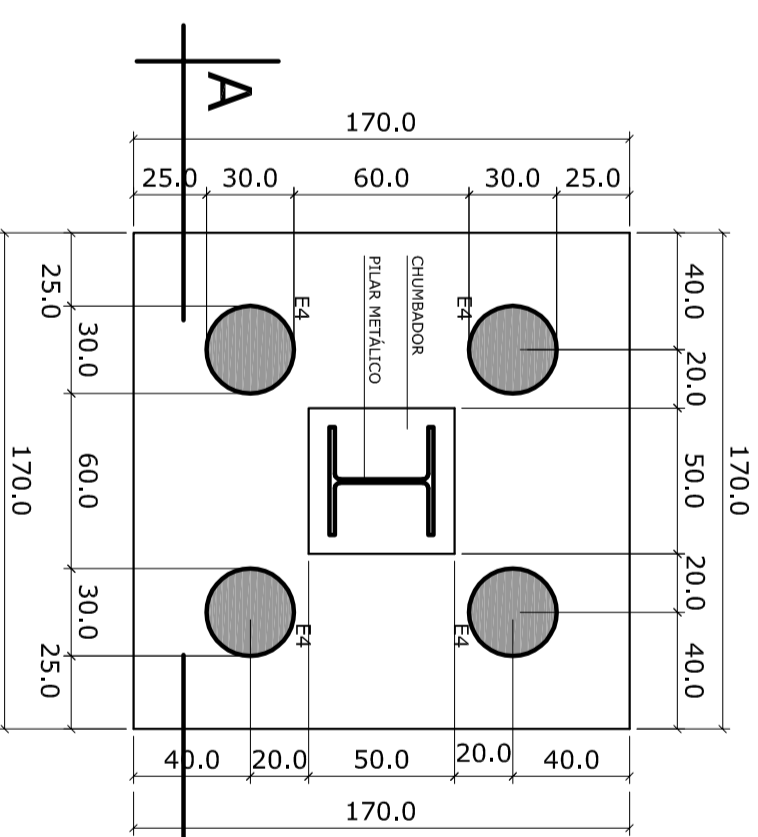


**QUADRO DE FERRO DOS BLOCOS**

ESTR	DI	Q	CM	F	PROF	TOTAL	APD
200/20	3	12	1020	600	300	1500	CA-40
200/20	1	12	1020	600	300	1500	CA-40
300/30	3	12	1020	600	300	1500	CA-40
300/30	1	12	1020	600	300	1500	CA-40
550/55	2	12	1020	600	300	1500	CA-40
550/55	1	12	1020	600	300	1500	CA-40
SUB	7	423	258	413,448	56	23	CA-40
<b>TOTAL TOTAL (kg)</b>							<b>4316,448</b>

- VOLUME DE CONCRETO MÓDULO = 4,28 m³  
 - VOLUME DE CONCRETO DAS ESTRUCAS = 13,30 m³  
 - VOLUME DE CONCRETO DAS ESCALANAS = 44,46 m³  
 - ÁREA DE FORMA DOS BLOCOS = 1644,00 m²

**DETALHE E ARMAÇÃO**  
B(P1=P6=P7=P11 a P15=P18=P30 a P33=P47)-(13X)

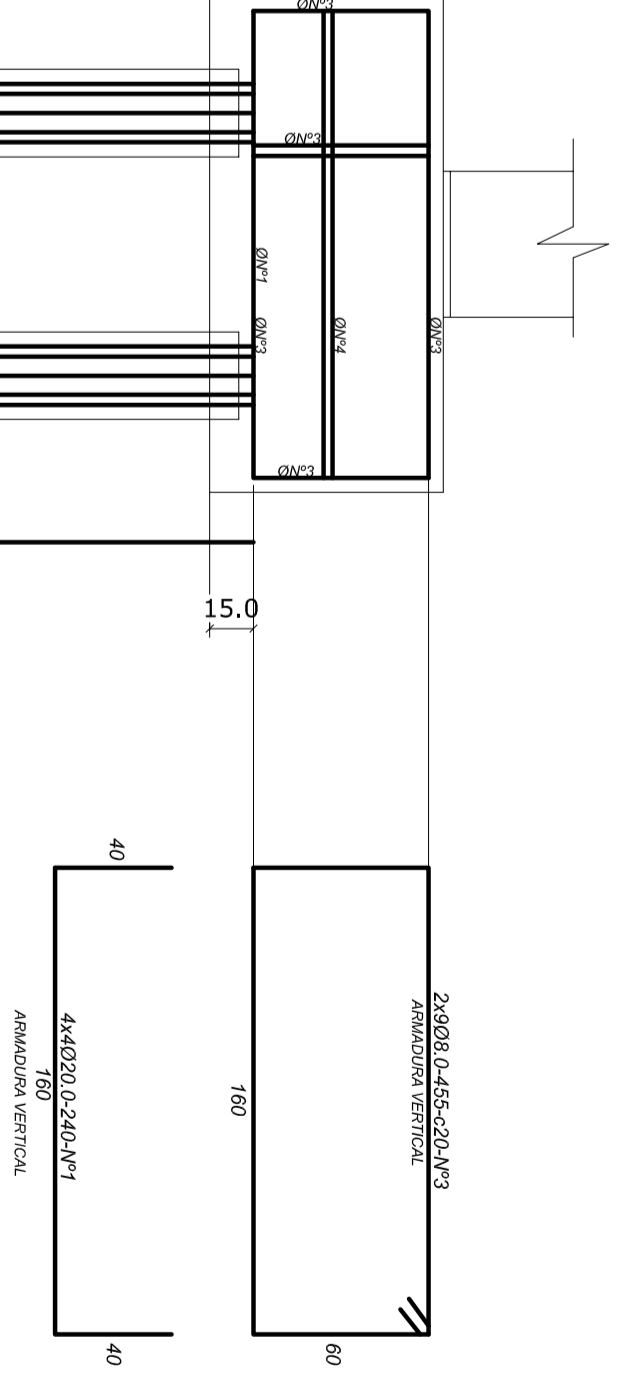
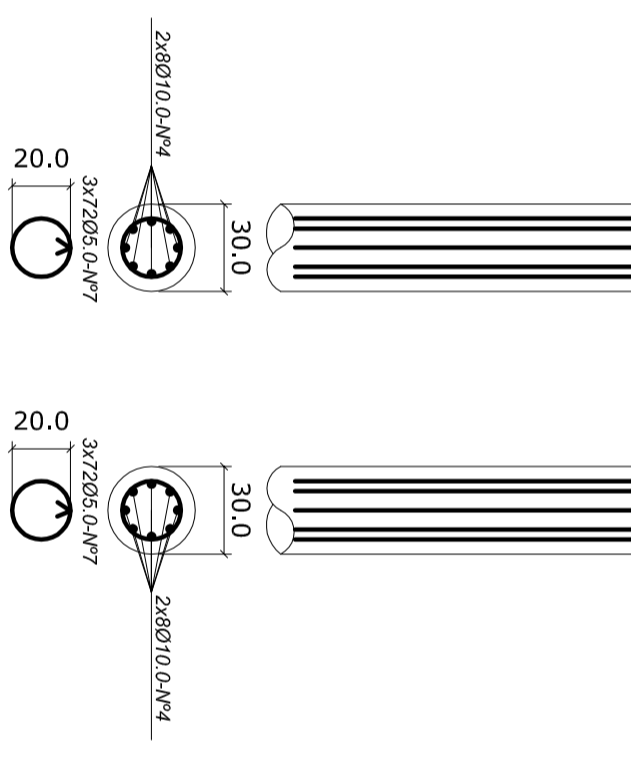
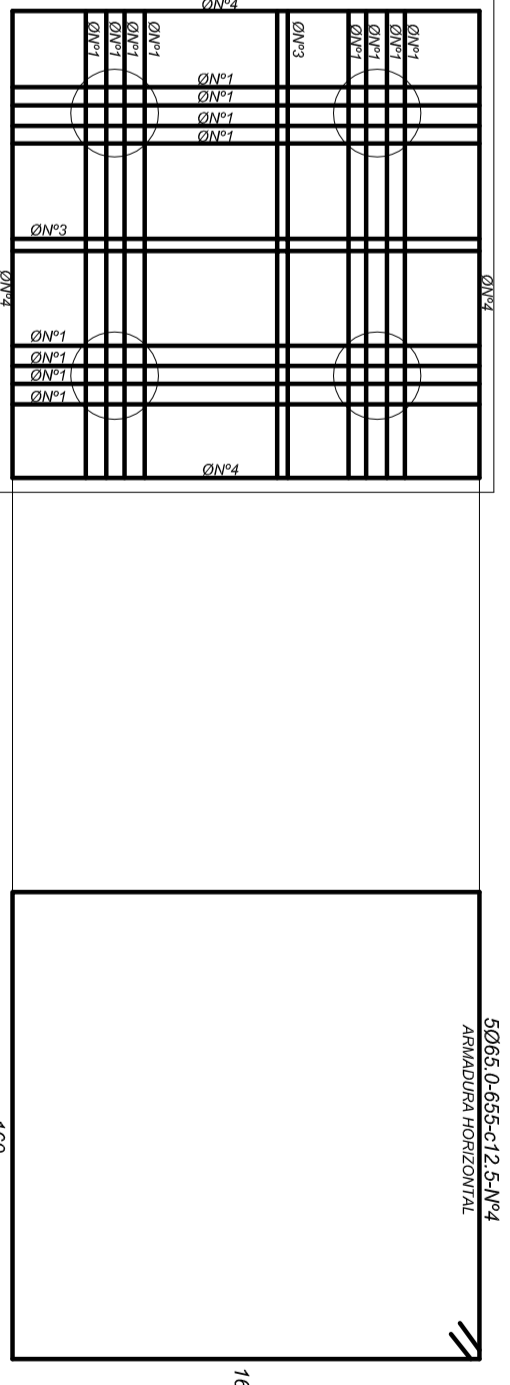
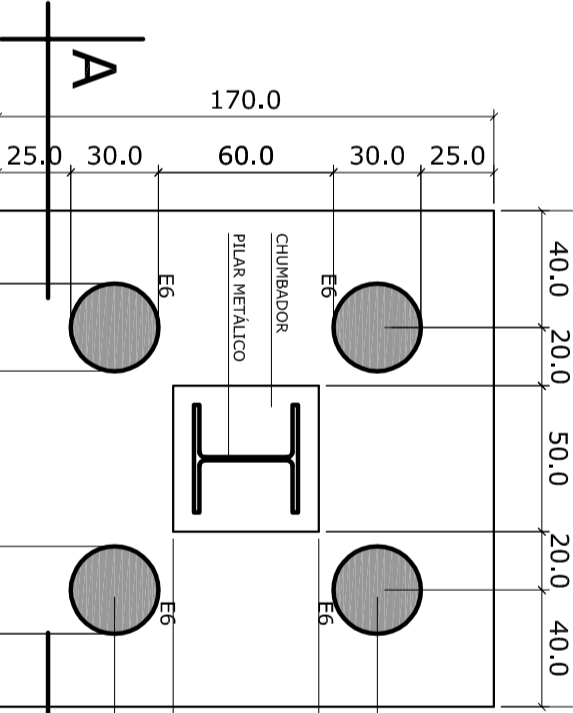


**QUADRO DE FERRO DOS BLOCOS**

ESTR	DI	Q	CM	F	PROF	TOTAL	APD
200/20	1	120	1200	600	300	1500	CA-40
200/20	2	120	1200	600	300	1500	CA-40
200/20	3	120	1200	600	300	1500	CA-40
200/20	4	120	1200	600	300	1500	CA-40
200/20	5	120	1200	600	300	1500	CA-40
200/20	6	120	1200	600	300	1500	CA-40
200/20	7	120	1200	600	300	1500	CA-40
200/20	8	120	1200	600	300	1500	CA-40
200/20	9	120	1200	600	300	1500	CA-40
200/20	10	120	1200	600	300	1500	CA-40
200/20	11	120	1200	600	300	1500	CA-40
200/20	12	120	1200	600	300	1500	CA-40
200/20	13	120	1200	600	300	1500	CA-40
200/20	14	120	1200	600	300	1500	CA-40
200/20	15	120	1200	600	300	1500	CA-40
200/20	16	120	1200	600	300	1500	CA-40
200/20	17	120	1200	600	300	1500	CA-40
200/20	18	120	1200	600	300	1500	CA-40
200/20	19	120	1200	600	300	1500	CA-40
200/20	20	120	1200	600	300	1500	CA-40
200/20	21	120	1200	600	300	1500	CA-40
200/20	22	120	1200	600	300	1500	CA-40
200/20	23	120	1200	600	300	1500	CA-40
200/20	24	120	1200	600	300	1500	CA-40
200/20	25	120	1200	600	300	1500	CA-40
200/20	26	120	1200	600	300	1500	CA-40
200/20	27	120	1200	600	300	1500	CA-40
200/20	28	120	1200	600	300	1500	CA-40
200/20	29	120	1200	600	300	1500	CA-40
200/20	30	120	1200	600	300	1500	CA-40
<b>TOTAL TOTAL (kg)</b>							<b>2193,663</b>

- VOLUME DE ESCALANAS = 24,12 m³  
 - VOLUME DE CONCRETO MÓDULO = 1,16 m³  
 - VOLUME DE CONCRETO DAS ESTRUCAS = 14,70 m³  
 - VOLUME DE CONCRETO DAS ESCALANAS = 594,80 m³  
 - ÁREA DE FORMA DOS BLOCOS = 41,88 m²

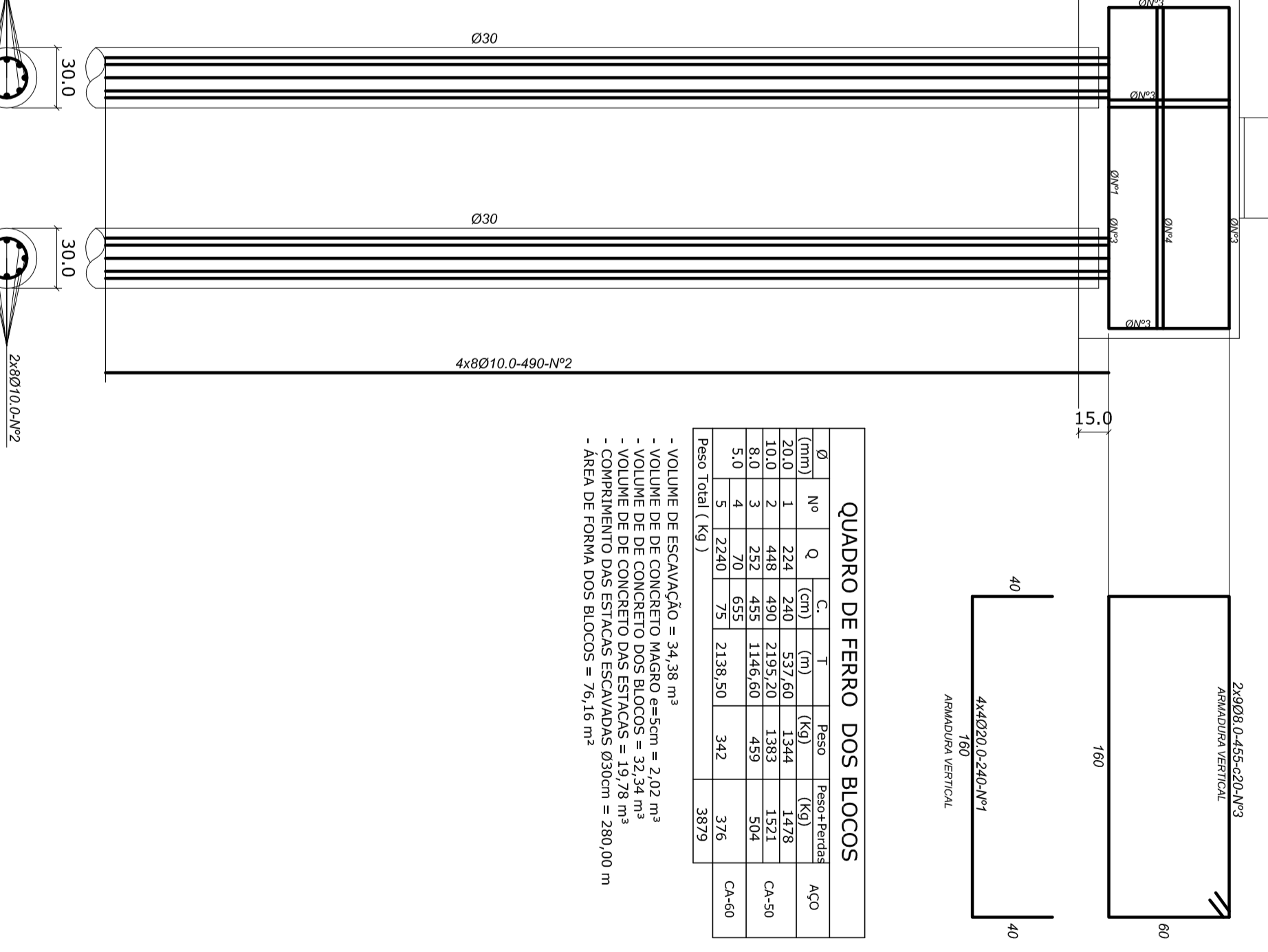
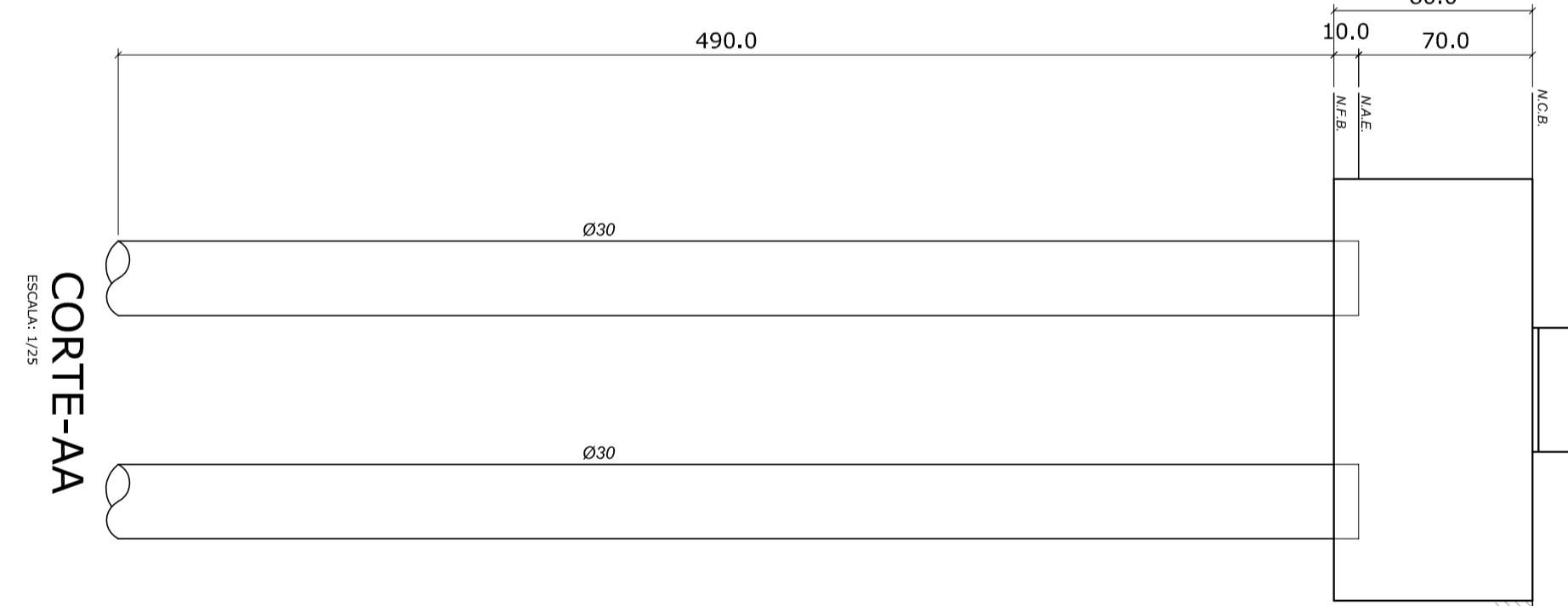
**DETALHE E ARMAÇÃO**  
B(P2 a P4=P26=P27=P29=P33=P48 a P51=P57)-(14X)



**QUADRO DE FERRO DOS BLOCOS**

ESTR	DI	Q	CM	F	PROF	TOTAL	APD
200/20	1	120	1200	600	300	1500	CA-40
200/20	2	120	1200	600	300	1500	CA-40
200/20	3	120	1200	600	300	1500	CA-40
200/20	4	120	1200	600	300	1500	CA-40
200/20	5	120	1200	600	300	1500	CA-40
200/20	6	120	1200	600	300	1500	CA-40
200/20	7	120	1200	600	300	1500	CA-40
200/20	8	120	1200	600	300	1500	CA-40
200/20	9	120	1200	600	300	1500	CA-40
200/20	10	120	1200	600	300	1500	CA-40
200/20	11	120	1200	600	300	1500	CA-40
200/20	12	120	1200	600	300	1500	CA-40
200/20	13	120	1200	600	300	1500	CA-40
200/20	14	120	1200	600	300	1500	CA-40
<b>TOTAL TOTAL (kg)</b>							<b>2193,663</b>

- VOLUME DE ESCALANAS = 24,12 m³  
 - VOLUME DE CONCRETO MÓDULO = 1,16 m³  
 - VOLUME DE CONCRETO DAS ESTRUCAS = 14,70 m³  
 - VOLUME DE CONCRETO DAS ESCALANAS = 594,80 m³  
 - ÁREA DE FORMA DOS BLOCOS = 41,88 m²

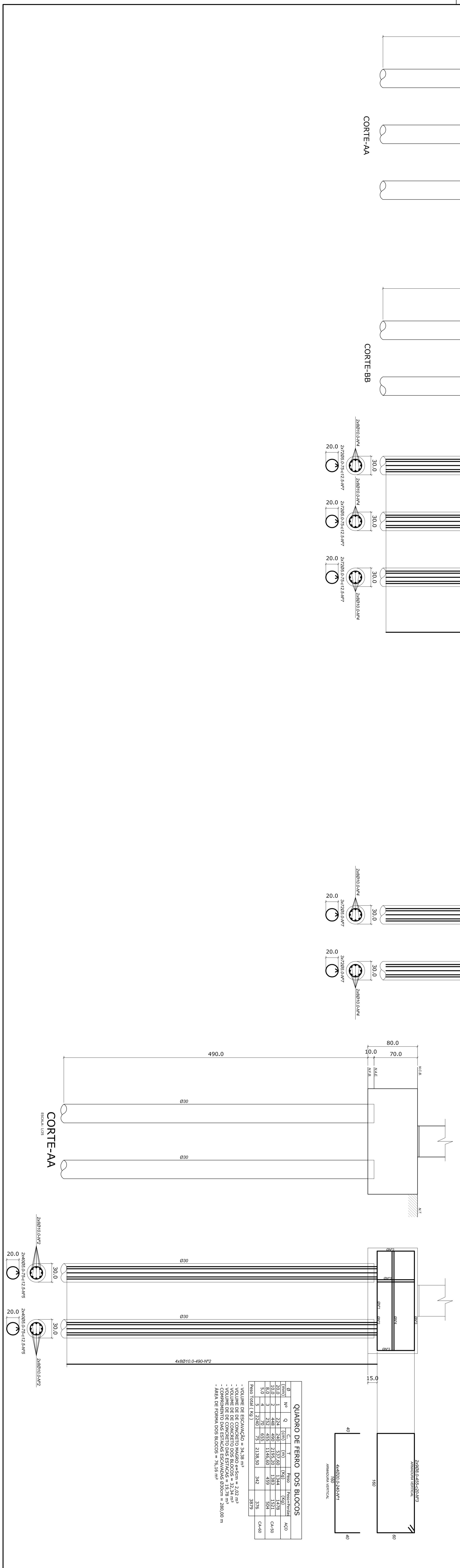


**DADOS DAS ESTRUCAS ESCALANAS**

ESTRUC	DIÁMETRO	CAPACIDADE DE CARGA	COMPRIMENTO	COMPRIMENTO DE ARMAÇAMENTO
E3	15,00	400	3,50	4,50
E3	20,00	500	3,50	4,50
E7	30,00	700	3,50	4,50
E7	35,00	800	3,50	4,50
E8	30,00	800	3,50	4,50
E8	35,00	900	3,50	4,50
E8	45,00	1000	3,50	4,50

**NOTAS:**

- 1 - BARRAS EM TUBO
- 2 - BARRAS EM CANTO
- 3 - BARRAS EM TUBO COM REBARTE
- 4 - BARRAS EM CANTO COM REBARTE
- 5 - BARRAS EM TUBO COM REBARTE E REBARTE
- 6 - BARRAS EM CANTO COM REBARTE E REBARTE
- 7 - BARRAS EM TUBO COM REBARTE E REBARTE
- 8 - BARRAS EM CANTO COM REBARTE E REBARTE
- 9 - BARRAS EM TUBO COM REBARTE E REBARTE
- 10 - BARRAS EM CANTO COM REBARTE E REBARTE



<b>WARNER BARROS</b> PROFESSOR RESPONSÁVEL TÉCNICO		<small>ESMAE - Engenharia e Serviços</small> RUA SÃO CARLOS, 156 - JARDIM ARAUCÁRIA - SÃO PAULO - SP CNPJ Nº 07.300.521/0001-20	
CLIENTE:	TRIBUNAL DE JUSTIÇA	LOCAL:	RIO BRANCO-AC
TÍTULO:	<b>ESTRUTURAL</b>	DATA:	02/05
PROFETA:	WANDER OLIVEIRA BARROS	ESCALA:	NAO/10/14
PROJETO:	ESTRUTURAL	OBSERVAÇÕES:	
APROVADO:		REVISÃO:	